

# **The Hearing Sciences**

*Third Edition*

Editor-in-Chief for Audiology  
**Brad A. Stach, PhD**

# **The Hearing Sciences**

*Third Edition*

**Teri A. Hamill, PhD**  
**Lloyd L. Price, PhD**





5521 Ruffin Road  
San Diego, CA 92123

e-mail: [info@pluralpublishing.com](mailto:info@pluralpublishing.com)  
Web site: <http://www.pluralpublishing.com>

Copyright © 2019 by Plural Publishing, Inc.

Typeset in 10.5/13 Garamond by Achorn International  
Printed in the United States of America by McNaughton & Gunn

All rights, including that of translation, reserved. No part of this publication may be reproduced, stored in a retrieval system, or transmitted in any form or by any means, electronic, mechanical, recording, or otherwise, including photocopying, recording, taping, Web distribution, or information storage and retrieval systems without the prior written consent of the publisher.

For permission to use material from this text, contact us by  
Telephone: (866) 758-7251  
Fax: (888) 758-7255  
e-mail: [permissions@pluralpublishing.com](mailto:permissions@pluralpublishing.com)

*Every attempt has been made to contact the copyright holders for material originally printed in another source. If any have been inadvertently overlooked, the publishers will gladly make the necessary arrangements at the first opportunity.*

#### **Library of Congress Cataloging-in-Publication Data**

Names: Hamill, Teri, author. | Price, Lloyd L., author.  
Title: The hearing sciences / Teri A. Hamill, Lloyd L. Price.  
Description: Third edition. | San Diego, CA : Plural Publishing, [2019] |  
Includes bibliographical references and index.  
Identifiers: LCCN 2017034252 | ISBN 9781944883638 (alk. paper) |  
ISBN 1944883630 (alk. paper)  
Subjects: | MESH: Hearing—physiology | Psychoacoustics | Speech Perception |  
Ear—physiology | Ear—anatomy & histology | Hearing Disorders  
Classification: LCC QP461 | NLM WV 272 | DDC 612.8/5—dc23  
LC record available at <https://lcn.loc.gov/2017034252>

# Contents

Preface	<i>xxv</i>
Reviewers	<i>xxvii</i>
About the Authors	<i>xxix</i>

## SECTION ONE. BASIC ACOUSTICS AND INSTRUMENTATION

<b>Chapter 1. Physical Properties of Sound</b>	<b>3</b>
Energy	3
Opposing Forces	4
Units of Measurement	5
Sound Energy	6
Compression and Rarefaction	9
Frequency	10
Intensity	11
Limits of Human Frequency Detection	11
Summary	12
Review Questions	12
<b>Chapter 2. Ratios, Logarithms, and Decibels</b>	<b>13</b>
Why Do We Need The Decibel?	13
Creating a More Workable Numbering System for Measuring Sound and Hearing	13
Base 10 Exponents	14
Expressing Pressure Measurements with Base 10 Exponents and Significant Digits	15
Adding and Subtracting Numbers in Scientific Notation	16
Logarithms Are Based On Exponents	16
Logarithms of Numbers With Only 1 and 0	16
Logarithms of Numbers Other Than 1 and 0	17
Why Are Logs and Antilogs Important?	17
Antilogs	18
The Log of $X$ Times $Y$	18
Log of $(X$ Divided by $Y)$	18
Hints on Using the Calculator	18
Obtaining the Log of a Number That Is Raised to a Power	18
The Decibel	19
Power	19
Doubling Power	20
Pressure	20
Doubling Power Does Not Double Pressure	22
Doubling the Distance from the Source	22
More Practice at Calculating Sound Pressure Levels	23
More Practice at Calculating Intensity Levels	23

Relative Powers and Pressures	24
Adding Decibels	25
Summary	26
Review Questions	26
<b>Chapter 3. Further Examination of Properties of Sound</b>	<b>27</b>
Speed of Sound Transmission	27
Wavelength	28
Period	28
Relationship of Period and Wavelength	29
Sound Transmission Effects	30
Diffraction and Reflection	30
Sound Absorption, Transmission Loss, and Reverberation Time	32
The Doppler Effect	32
Sonic Booms and Thunder	33
Temperature Changes Affect Speed of Sound	33
Wind Effects	34
Types of Decibel Scales	34
Review of dB SPL and dB IL	34
dB Increase	35
dB HL and dB SL	35
Introduction to the Audiogram	36
Summary	37
Review Questions	37
<b>Chapter 4. The Sine in Sine Waves, Other Types of Sound Waves, and Introduction to Filters and Frequency Analysis</b>	<b>39</b>
Triangles and Sines	39
Plotting Sine Waves	41
Simple Harmonic Motion, the Pendulum, and the Circle	42
Molecular Vibration and the Sine Wave	43
How We Calculate Sine Wave Relative Amplitude When Phase Is Known (or Calculated)	45
How We Calculate Sine Wave Phase When Time and Frequency Are Known	46
Review Questions	46
Velocity and Acceleration	46
Phase Relationships of Particle Displacement, Velocity, and Acceleration	46
Complex Sound	47
Summing Pure Tones That Differ Only in Phase or Amplitude	47
Summing Pure Tones That Differ in Frequency	48
Harmonics and Distortion Products	52
Harmonic Distortion	52
Other Distortion Tones	52
Air Molecule Vibration Patterns for Complex Sounds	53
Fourier's Theorem	53
Common Types of Tones and Noise	55
Square, Triangular, and Sawtooth Waves	55

---

Amplitude and Frequency Modulating Pure Tones	55
White and Pink Noise	57
The Click (Transient) Signal	59
Waveform Rise and Fall Envelopes	61
Introduction to Filtering	63
Summary	65
References	66
Additional Review Questions	66
<b>Chapter 5. Impedance, Energy Transfer, and Resonance</b>	<b>67</b>
Impedance	67
Mass and Stiffness Forces are 180 Degrees Out of Phase	68
Formula for Impedance	69
The Meaning of Impedance ( $Z$ )	70
The Meaning of Phase Angle	71
Impedance of a Medium	72
Alternative Formula for Impedance	73
Acoustic Admittance	74
Energy Transfer	74
Resonance of Systems	76
Standing Waves and Resonance of Tubes	77
Standing Waves	77
Resonance of a Tube Closed at One End	79
Why a Glass Beer Bottle Resonates When You Blow Across the Top, but a Plastic Soda Bottle Not So Much	83
Resonance of a Tube Closed at Both Ends	83
Summary	84
References	84
Review Questions	84
<b>Chapter 6. Electricity and Analog Systems</b>	<b>87</b>
Electron Flow	87
Ohm's Law	90
Electrical Circuits	91
What Is Alternating Current (AC) Electricity?	92
How is AC Sound Created by an AC-Powered Amplifier Circuit? Is It Different Than in a DC-Powered Amplifier?	92
Ion Flow	93
Introduction to Common Analog Components	93
Microphones	93
Amplifiers	94
Filters	94
Calculating Filter Cutoff Frequencies	95
Cutoff Frequencies Defined at 3-dB Down Points	96
Speakers	96
Transducers	96
Volume Controls	97
Frequency Response Controls	97

Summary	97
Review Questions	97
<b>Chapter 7. Digital Systems and Digital Signal Processing</b>	<b>99</b>
Bits and Sampling Rates	99
How Big Is That?	99
How Often Should Amplitude Be Measured?	100
Building an Analogy to Use Later	101
Additional Digitization Concepts	101
Analog to Digital Converters	101
Nyquist Frequency	101
Aliasing	102
Anti-Aliasing Filtering	102
Digital to Analog Converters	103
Imaging	103
Anti-Imaging Filters	103
Overview of What a Digital System Can Do	103
Fast Fourier Transform (FFT) Analysis of Auditory Signals	104
Windowing	104
Overlapping Windows	107
Goal of FFT Analysis	107
FFT Resolution	108
Example FFT Results	109
Digital Noise in the FFT Analysis	110
Calculating Noise per Bin and Decibel of Bandwidth per Bin	111
Time-Domain Signal Averaging	112
Hearing Aid Digital Noise Reduction	114
Summary	115
Review Questions	116
<b>Chapter 8. Equipment Used in Audiology and Hearing Science</b>	<b>119</b>
Audiometers	119
Signal Generators	121
Sound Booths	123
Immittance Devices (Middle Ear Analyzers)	124
Tympanometers	124
Measurements of Middle Ear Absorption and Reflectance	128
Acoustic Stapedial Reflex Measurement	129
Otoacoustic Emission Devices	129
Spontaneous Otoacoustic Emission Measurement	129
Transient-Evoked Otoacoustic Emission Measurement	130
Distortion-Product Otoacoustic Emission Measurement	130
Signal Processing Used in Analysis of All Types of Otoacoustic Emission Measurements	131
Auditory Evoked Response Measurement Systems	132
Common Mode Rejection	132
Time-Domain Signal Averaging and Artifact Rejection	133
Filtering the Evoked Response	134
Hearing Aid Analyzers	134



---

Real-Ear Measurement Systems	137
Speech Mapping Technology	137
Original Real-Ear Testing	139
Components: Detailed Information	139
Review of Current: Alternating Current (AC) and Direct Current (DC)	139
What Is a Conductor, an Insulator?	139
Semiconductors	140
“Doping” Silicon to Make it More or Less Likely to Take/Give Electrons	140
Diodes	141
Transistors	142
How a Transistor Acts As an Amplifier	143
How a Transistor Acts As a Switch	144
Resistors and Resistance in Circuits; More on Ohm’s Law	144
Resistor Appearance and Coding	144
Ohm’s Law Review	145
Resistors in Series	145
Resistors in Parallel	146
Batteries in Series and in Parallel	146
Capacitors	147
Review of Alternating Current (AC) and Direct Current (DC)	147
Capacitors Block Direct Current, Pass Alternating Current	147
Inductors	148
Power Supplies for Hearing Instruments and Testing Equipment:	
Safety Concerns and Electronic Noise	148
Relative Safety of AC and DC Power Supplies	148
Grounding Equipment, Fuses, and Circuit Protectors	148
Regulated Power Supplies and Power Conditioners	150
Surge Protectors/Spike Arrestors	151
Arc Fault Circuit Interrupters	151
Ground Noise	151
Floor Noise	152
Microphones	152
Types of Microphones	152
Microphone Directionality	153
Microphone Care	154
Sound Level Meters	156
Calibration of Sound Level Meters	157
Types of Decibel Scales	158
Sound Level Meter Response Times	160
Decibel Range Selection	161
Earphone Couplers	161
Calibration of Audiometer Output Level: Reference Equivalent Threshold Sound Pressure Levels	161
Frequency Counters	162
Audiometer Calibrators	162
Oscilloscopes	162
Summary	164
Review Questions	165

**SECTION TWO. INTRODUCTION TO SPEECH ACOUSTICS**

<b>Chapter 9. Classification of Speech Sounds</b>	<b>171</b>
Consonants, Vowels, and Diphthongs	171
Consonants Are Categorized By Place of Articulation, Manner of Articulation, and Voicing	171
Alveolar Sounds	172
Palatal Sounds	173
Glottal Sound	173
Velar Sounds	173
Linguadental Sounds	174
Bilabial Sounds	174
Labiodental Sounds	175
Vowels Differ in Tongue Height, Placement, Tension, and Lip Rounding	175
Front Vowels	175
Central Vowels	175
Back Vowels	176
Summary	176
Review Questions	177
<b>Chapter 10. Acoustics of Speech</b>	<b>179</b>
How Speech Sound Waveforms Can Be Viewed	179
Fundamental Frequency, Glottal Pulses, Harmonics, and Formant Frequencies	182
Acoustic Characteristics of Vowels	183
Formant Frequencies Are Created by Resonance of the Vocal Tract	183
F1 and F2 of Vowels	184
Intensity of Vowel Sounds	184
Low Importance of Vowels for Speech Understanding	185
Acoustic Characteristics of Consonants	185
Stop Consonants Contain Wideband Energy	185
Voice Onset Time Distinguishes Voiced and Unvoiced Sounds	186
Formant Frequency Transitions Provide Additional Acoustic Cues	186
Fricatives Have Longer Duration and More High-Frequency Energy	187
Affricatives Have Characteristics of Both Plosives and Fricatives	187
Nasals Have Low-Frequency Energy (Nasal Murmur) and Antiresonances	187
Glides Are Characterized by Vowel Formant Transitions	190
Intensity of Consonants	191
Importance of Consonants for Speech Understanding	192
Summary	192
Reference	193
Review Questions	193

**SECTION THREE. ANATOMY AND PHYSIOLOGY OF THE EAR**

<b>Chapter 11. Overview of Anatomy and Physiology of the Ear</b>	<b>197</b>
Anatomic Terms for Location	197
Anatomic Views	197

---

General Sections of the Ear	199
The Temporal Bone	200
Lobes of the Brain	200
Overview of Physiology	201
Summary	202
References	202
Review Questions	202
<b>Chapter 12. Introduction to the Conductive Mechanisms</b>	<b>203</b>
The External Ear	203
The Middle Ear	204
The Tympanic Membrane	205
The Middle Ear Space	206
The Ossicles	207
Overview of How Middle Ear Ossicular Motion Permits Hearing	207
Middle Ear Muscles	207
The Eustachian Tube	207
Medial Wall	208
Posterior Wall	208
The Lateral or Tympanic Wall	209
Anterior Wall	210
Superior Wall	210
Inferior Wall	210
Summary	211
Review Questions	211
<b>Chapter 13. Introduction to the Physiology of the Outer and Middle Ear</b>	<b>213</b>
Resonances of the External Ear	213
Energy Transfer through the Middle Ear	214
Impedance Mismatch between Air and Cochlear Fluids	214
The Middle Ear as an Impedance-Matching Transformer	214
Ossicular Lever	214
Areal Ratio	216
The Acoustic Reflex	217
Summary	219
References	219
Review Questions	219
<b>Chapter 14. Bone-Conduction Hearing</b>	<b>221</b>
Bone-Conduction Mechanisms	221
Skull Vibration: Distortional Aspect of Bone-Conduction Hearing Introduced	221
Inertial Aspects of Bone Conduction	222
Further Discussion of the Distortional Aspects of Bone Conduction	222
Osseotympanic Aspects of Bone Conduction: Bone Conduction	
by Air Conduction	223
Hearing Is Tested by Air and Bone Conduction	224
Bone Conduction by Air Conduction (Osseotympanic Bone Conduction)	
and the Occlusion Effect	224

Summary	228
References	228
Review Questions	228
<b>Chapter 15. Advanced Conductive Anatomy and Physiology</b>	<b>229</b>
Pinna	229
Embryologic Development	229
Landmarks	229
Physiology of the Pinna	231
External Auditory Meatus	232
Detailed Anatomy	232
Proximity of the Temporomandibular Joint	234
Proximity of Nerves to the External Auditory Meatus	234
Skin of the External Auditory Meatus	235
Cerumen	235
Detailed Physiology of the External Auditory Meatus	236
Tympanic Membrane	239
Slant and Cone Depth	239
Third Impedance Matching Transformer Mechanism	239
Detailed Study of the Ossicular Chain	240
Resonance of the Middle Ear	241
Mass and Stiffness of the Middle Ear Affect Sound Transmission	
Differently at Different Frequencies	241
Pathology Changes Middle Ear Sound Transmission	243
Acoustic Reflex Physiology	246
Reflex Latency	246
Reflex Adaptation	246
Reflex Threshold	247
Summary	247
References	248
Review Questions	248
<b>Chapter 16. Introduction to the Sensory Mechanics</b>	<b>249</b>
The Bony Labyrinth	249
The Membranous Labyrinth	250
The Vestibular System	250
The Cochlea	251
Structures within the Cochlea	252
Gross Structures	252
Fine Details of Features in the Cochlea	252
Mass and Stiffness Differences along the Basilar Membrane	254
Review of How the Detailed Features Fit Within the Larger Picture	255
Cochlear Blood Supply	256
Innervation of the Cochlea	257
Summary	258
References	259
Review Questions	259

---

<b>Chapter 17. Advanced Study of the Anatomy of the Cochlea</b>	<b>261</b>
Hair Cell Height and Number	261
Stereocilia and Their Tip Links and Side Links	262
Supporting Cells	263
Chemical Composition of Endolymph and Perilymph	265
Comparative Electrical Charges of Fluids in the Cochlea	265
Potassium Influx Regulates Calcium Coming Into Hair Cells	266
Ion Changes in the Hair Cell and Circulation of Ions	266
Neurotransmitter Release	269
Summary	269
Review Questions	270
<b>Chapter 18. Introduction to Cochlear Physiology</b>	<b>271</b>
Arrangement of the Cilia Relative to the Tectorial Membrane	271
Mass/Stiffness Gradient of the Basilar Membrane	272
Review of Divisions and Membranes within the Cochlea	273
The In-and-Out Motion of the Stapes Footplate Becomes an Up-and-Down Motion of the Basilar Membrane, Called the Traveling Wave	275
The Location of the Maximum Place of Movement on the Basilar Membrane Is Determined by the Sound Frequency	276
An Unfortunate Untwisting of Fate	277
The Height of the Traveling Wave Envelope Is Related to Sound Intensity	277
Ciliary Shearing	278
Returning to the Concept That the Up-and-Down Basilar Membrane Motion Creates Side-to-Side Shearing of the Hair Cell Cilia	278
Shearing of Cilia Opens Microchannels (Mechanoelectrical Transduction Channels) in the Cilia and Creates Chemical Changes in the Hair Cell Body	279
The Outer Hair Cell Active Mechanism Enhances the Motion of the Inner Hair Cell Cilia	279
Hearing Requires Inner Hair Cell Stimulation	281
Summary	281
Reference	282
Review Questions	282
<b>Chapter 19. More Hair Cell Physiology</b>	<b>283</b>
Calcium and Potassium Channels, Prestin, and Active Cilia	283
Review of Cellular Chemistry Changes	283
Prestin Protein Contraction Creates the Active Mechanism	284
Hair Cell Cilia Also Appear to Have Active Properties	284
Tip Links and MET Channels in Outer and Inner Hair Cell Stereocilia	286
Otoacoustic Emissions Are Sounds that Come from the Cochlea as a Result of the Active Mechanism(s) of the Outer Hair Cells	286
Are Cilia Responsible for Otoacoustic Emissions?	287
What Are the Places on Basilar Membrane for Creation of the Otoacoustic Emission?	287

Prestin Knockout Mice	289
Tip Links and Insertion Plaques: Slow Cilia Adaptation	289
Apoptosis: a Better Way for Hair Cells to Die	293
Reactive Oxygen Species	293
Antioxidants	294
Melanin to the Rescue	294
How the Traveling Wave Is Altered by the Active Mechanism of the Cochlea	294
Two-Tone Suppression Is Related to the Active Mechanism	295
Summary	296
Reference	298
Review Questions	298
<b>Chapter 20. Overview of Cochlear Potentials and the Auditory Nervous System</b>	<b>301</b>
Chemical Changes in the Hair Cells and Neurons	301
The Cochlear Microphonic	301
The Summating Potential	302
Action Potentials	303
Pattern of Neural Firing Encodes Frequency and Intensity	305
The Primary Afferent Auditory Pathway	305
Location of Afferent Neuron Dendrites	305
Course of the VIIIth Nerve	307
Cerebellopontine Angle	307
Nuclei	307
Primary Auditory Cortex	310
Introduction to Efferent Neurons	310
Summary	311
References	312
Review Questions	312
<b>Chapter 21. Advanced Study of Cochlear and VIIIth Nerve Potentials</b>	<b>315</b>
Characteristic Frequency	315
Cochlear Resting Potentials	315
Endocochlear Potential	316
Intracellular Potentials	316
Cochlear Receptor Potentials	316
Cochlear Microphonic	316
Summating Potential	317
Comparison of the Tuning of the Cochlear Microphonic and the Summating Potential	318
Summary of Cochlear Microphonic and Summating Potential	318
Action Potentials	319
Electrical Potentials in Neurons	319
N1 and N2 Responses of the VIIIth Nerve	321
Refractory Period	322
Spontaneous Discharge Rates	323
Threshold of Neural Firing Is Related to Spontaneous Discharge Rate	323
Firing Rates Are Influenced by Efferent Innervation	324

Pure-Tone Frequencies and Intensities That Cause a Neuron to Fire Faster Than Spontaneous Rate	324
Upward Spread of Masking: Masking of One Stimulus by a Second Stimulus	325
Neural Tuning Curves	327
How Tuning Curves Are Obtained	327
$Q_{10\text{ dB}}$ Calculations Describe Width of Tuning Curve Tips	330
Summary	331
References	331
Review Questions	331
<b>Chapter 22. How Frequency and Intensity Information Are Encoded</b>	<b>333</b>
The Neural Action Potential	333
Cell Membrane Characteristics	333
How the Action Potential Is Initiated	334
Propagation of the Action Potential Down the Axon	334
Rate of Firing of One Neuron Increases as the Stimulus Frequency Approaches the Characteristic Frequency	335
Different Combinations of Frequency and Intensity Can Create the Same Overall Number of Neural Discharges per Second	336
Problems with the Theory that Frequency Is Encoded by Rate of Discharge	337
Pattern of Neural Discharge Encodes Frequency and Intensity	338
Additional Information Is Obtained from Early and Late Neural Firings	339
Period Interval Histograms: Histograms Obtained with Pure-Tone Stimulation	340
Review of the Response of the VIIIth Nerve to Pure Tones	341
Limits of a Neuron's Phase-Locking Ability	342
Peristimulus Time Histograms for Longer Duration Tone Segment	343
Whole Nerve Potentials Reveal Signal Intensity	344
Masking of One Sound by a Second Sound	346
Two-Tone Suppression	346
Response of the VIIIth Nerve to Complex Signals	348
Poststimulus Time Histograms Obtained When Stimulating the Ear with Clicks and the Concept of Preferred Intervals	349
Response of Multiple Neurons of the Same Characteristic Frequency	351
Neural Encoding at Cochlear Nucleus and Higher Central Auditory Nuclei	351
Neural Cell Types (Appearance) in the Central Nervous System	351
Multiple Inputs to a Higher-Order Neuron Allows Alteration of Its Response Characteristics	351
Coincidence Detectors Improve Phase-Locking	352
Neurons May Be Excited by Differing Frequency Inputs	353
Peristimulus Time Histograms of Higher-Order Neurons	353
What Does the Variability in Cell Morphology, Tuning, and Neural Discharge Patterning Mean About Speech Encoding?	354
Encoding of Information Necessary for Sound Localization and Lateralization	354
Superior Olivary Complex Neurons Respond to Binaural Differences	355
Superior Olivary Complex Allows for Sound Fusion	357
Nuclei Are Tonotopically Organized	357
Nuclei Superior to Superior Olive	357

The Auditory Cortex	357
Summary	359
References	360
Review Questions	360
<b>Chapter 23. The Efferent Auditory System</b>	<b>363</b>
Olivocochlear Bundle	363
Medial Efferent System	364
Lateral Efferent Systems	364
Crossed and Uncrossed Efferent Fibers	364
Effect of Activation of the Efferent System	365
Medial Efferent System Activation	365
Lateral Efferent System Activation	365
Memory Aids	366
Other Efferent Pathways	366
The Acoustic Reflex	366
Stapedial Reflex Pathway	366
Effect of Stapedial Reflex Contraction	367
Role of Tensor Tympani	368
Acoustic Reflexes Elicited by Nonauditory Stimuli	368
Summary	369
Review Questions	369
<b>Chapter 24. Introduction to Peripheral Vestibular Anatomy and Physiology</b>	<b>371</b>
The Vestibular System: Bony and Membranous Labyrinths	371
Arrangement of the Semicircular Canals	372
Planes of the Canals of the Right and Left Ears Are Aligned	373
Anatomy and Physiology of the Semicircular Canals	374
Structures within the Ampullae of the Semicircular Canals	374
Angular Head Motion Directions	375
Cilia and Kinocilium in the Ampullae	375
Direction of the Endolymph/Cupula Movement That Is Excitatory	376
The Utricle and the Sacculle	377
Hair Cells of the Utricle and Sacculle	377
Vestibular Branch of the VIIIth Nerve	379
Summary	379
Reference	381
Further Reading	381
Review Questions	381
<b>Chapter 25. Introduction to Central Vestibular Anatomy and Physiology</b>	<b>383</b>
Functions of the Balance System	383
Awareness of Head Position	384
The Vestibulo-Ocular Reflex	384
Ewald's First Law	385
Muscles Controlling Eye Movements	385
Cranial Nerves of the Extraocular Muscles	385
Pathways From the Vestibular Nucleus to the Nerves Controlling Eye Movement	386



Neural Control of Eye Deflection During Head Turn	386
Limited Range of Eye Deflection	387
Nystagmus: Repeated Slow Drift, Rapid Saccadic Return Motion	387
Introduction to Ewald's Second Law	388
Summary of the Vestibulo-Ocular Reflex and Introduction to Videonystagmography Testing	388
Velocity Storage	389
Reflexes of the Balance System for Postural Control	390
Vestibulospinal Reflex	390
Cervico-Ocular Reflex	390
Cervicospinal and Cervicocollic Reflexes	390
Vestibulocervical and Vestibulocollic Reflexes	392
Summary of the Functions of Balance and Clinical Implications	392
Summary	396
Review Questions	397
<b>Chapter 26. Advanced Vestibular Anatomy and Physiology</b>	<b>399</b>
Size of the Vestibular System	400
Endovestibular Potentials	400
Frequency in the Vestibular System	401
The Vestibulo-Ocular Reflex in Response to Head or Body Rotation: Superimposed Nystagmus Beats	401
Frequency in Caloric Testing	404
Morphology of the Hair Cells of the Crista Ampullaris	406
Is There an Active Mechanism in the Vestibular System?	407
Characteristics of the First-Order Vestibular Neurons	407
Calyx, Bouton, and Dimorphic Neurons	407
Characterization of Neurons by Diameter	408
Neural Firing Rates and Patterns	408
Peripheral Areas of the Ampulla Encode Low-Frequency Stimulation	409
Afferent Neurotransmitters	409
Bidirectional Change in Firing Rate of Afferent Neurons	409
Efferent Innervation of the Crista Ampullaris	410
Detailed Study of Eye Muscle Attachments	411
Review of the Eye Muscles	411
Eye Movement from Superior/Inferior Obliques and Superior/Inferior Recti: Not Exactly As Expected From the Diagrams	411
Influence of the Canals	412
Tonic Contraction in the Absence of Movement, Head Movement Alters Contraction Strength	412
Analogy of a Catamaran	413
Horizontal Canal Control of Eye Movement	413
Vertical Semicircular Canal Mediated Control of Eye Movement	416
Left Posterior Canal	416
Right Posterior Canal	417
Left Anterior Canal	417
Right Anterior Canal	418
Semicircular Canal Neural Connections	419
Review of Gross Vestibular Neural Anatomy	419

Excitatory and Inhibitory Responses in the Second-Order Vestibular Neurons	419
Connection to the Cranial Nerves That Control Eye Movement	419
Macula and Its VOR Pathways	425
Review of the Structure and Function of the Macula of the Utricle and Saccule	425
The Otoconia Cause the Macula to Sense Gravity and Respond to Head Tilt	426
Connections Between Utricle and Extraocular Muscles	427
Connections Between the Saccule and Extraocular Muscles	427
Type I and Type II Hair Cells of the Macula	428
Neural Plasticity in the Central Vestibular System	428
Summary	428
References	429
Review Questions	429

## SECTION FOUR. BASIC PSYCHOACOUSTICS

<b>Chapter 27. Introduction to Psychoacoustics</b>	<b>433</b>
Threshold (in Decibel Sound Pressure Level) for Pure Tones Depends on Frequency	434
Two Ears Are Better Than One	435
Under Ideal Circumstances, a Person Can Detect a 1-dB Intensity Change	436
In General, a 10-dB Increase in Intensity is about a Doubling of Loudness (Some Studies Say 6 dB)	436
Loudness Grows a Bit Differently in the Low Frequencies: An Introduction to Phon Curves	436
Pitch	437
When Is a Pure Tone Tonal?	437
Detecting Change in Pitch	437
Doubling Frequency Creates a Musical Sameness But Not a Doubling of Pitch	438
Masking	438
Upward Spread of Masking	439
Critical Bands	439
Temporal Processing	440
Sounds Are Louder and More Tonal if at Least One-Quarter-Second in Duration	440
Temporal Order Detection	440
Gap Detection	441
Summary and Implications for Speech Perception	441
Review Questions	441
<b>Chapter 28. Classical Psychoacoustical Methodologies</b>	<b>443</b>
Classical Psychoacoustical Methods	444
Method of Limits	444
Effect of Instruction, Motivation, and Willingness to Guess	444

Response Latency and False Positive Responses	445
Effect of Using Increasing Versus Decreasing Intensity Runs	446
Method of Adjustment	446
Similarity of Results of Method of Adjustment and Method of Limits	448
Method of Constant Stimuli	450
Number of Trials and Step Size	450
Introduction to Forced-Choice Methods	450
Threshold Is Not 50% Correct Identification in a $n$ -Interval Forced-Choice Procedure	452
Introduction to Signal Detection Theory	452
Adaptive Procedures	453
Scaling Procedures	453
Magnitude Estimation	453
Magnitude Production	453
Fractionation	454
Cross-Modality Matching	454
Summary	454
Reference	454
Review Questions	455
<b>Chapter 29. Signal Detection Theory and Advanced Adaptive Approaches</b>	<b>457</b>
Signal Detection Theory	458
Understanding “Magnitude of the Sensory Event”	458
Signal-Plus-Noise Perception	459
Criterion Points for Decision Making, and How Hit and Correct-Rejection Percentages Reveal Spacing Between the Noise and Signal-Plus-Noise Distributions	460
Altering Subject Criteria in Signal Detection Theory and Receiver Operating Curves	465
The Magic of $d'$	465
Adaptive Methods to Determine the Signal Level that is Correctly Detected a Given Percentage of the Time	468
Change the Rules for When to Increase/Decrease Magnitude in Order to Estimate Different Percent Correct Points	469
Example of Rules Used to Find Threshold in a Three-Alternative Forced-Choice Experiment	469
Adaptive Procedures Can Be Used to Obtain the Response Function Curve	470
Disadvantage to a Block Up-Down Procedure	471
Interleaving Runs	471
Parameter Estimation by Sequential Testing	472
Gridgeman’s Paradox	472
Preference Testing in Hearing Aid Customization	472
Paired Comparisons	473
Summary	474
Reference	474
Further Reading	474
Review Questions	474

<b>Chapter 30. Threshold of Hearing, Loudness Perception, Just Noticeable Difference for Loudness and Loudness Adaptation</b>	<b>477</b>
Absolute Threshold of Hearing	478
Minimal Audible Pressure and Minimal Audible Field	478
Binaural and Equated Binaural Thresholds	480
Effect of Stimulus Duration on Absolute Threshold	481
Effect of Stimulus Repetition Rate	481
Difference Threshold for Intensity (DLI)	482
Spectral Profile Analysis	484
Loudness Perception	485
Loudness Level	486
Decibel Scales Revisited	486
Loudness Scaling	487
Loudness Adaptation	489
Temporary Threshold Shift	490
Summary	491
References	491
Review Questions	492
<b>Chapter 31. Calculating Loudness</b>	<b>495</b>
Physiologic Correlates of Loudness and Loudness Growth	495
The Transfer Function of the Ear	495
Active Mechanism Less Effective at Low Frequencies	497
Role of the Active Mechanism for Varying Intensity Level Sounds	497
Spread of Activity along the Basilar Membrane	498
Calculating Loudness of Pure Tones	498
Complex Tone Loudness	499
Summary	500
References	500
Review Questions	501
<b>Chapter 32. Basics of Pitch Perception</b>	<b>503</b>
Pitch Perception	503
Limits of Tonal Perception	503
Pitch Perception Is Intensity Dependent	504
Pitch Perception Is Duration Dependent	504
Pitch Scaling	504
The Mel Scale of Pitch (and Other Pitch Scales)	504
Octave Scales	507
Bark Scale	507
Just Noticeable Difference of Frequency	510
Changes in DLF with Frequency	511
Changes in DLF with Intensity	513
Make Sure You are Measuring a DLF and Not a DLI!	513
Perception of Two Tones and of Distortions	514
Beats and Simple Difference Tones	514
Aural Harmonics, Summation Tones, and Other Difference Tones	514
Summary	515
References	516
Review Questions	516

<b>Chapter 33. Introduction to Masking</b>	<b>517</b>
Tone-on-Tone Masking	517
Critical Bands	520
Summary	522
Reference	522
Review Questions	523
<b>Chapter 34. More About Masking and Cochlear Frequency Distribution</b>	<b>525</b>
Masking Pure Tones With White Noise and Narrowband Noise:	
Critical Bands and Critical Ratios	525
Level per Cycle Calculations	525
Critical Bands in Hz and in Decibels	527
A Critical Band Is Also Called a Bark	527
How Critical Bands Vary With Frequency	528
Fletcher's Theory of Critical Ratio	528
Equivalent Rectangular Bandwidths	529
Other Ways to Evaluate Critical Bands	530
Cochlear Maps From Critical Bands	532
The Relationship Between DLF, Critical Ratios, and Equivalent	
Rectangular Bandwidths	533
Comodulation Release From Masking	534
Remote Masking	535
Summary and Some Further Analysis	537
References	538
Review Questions	538
<b>Chapter 35. Psychophysical Tuning Curves</b>	<b>539</b>
Psychophysical Tuning Curves (PTCS)	539
How PTCs Are Obtained and Interpreted	539
Correlation to Traveling Wave Locations	540
Families of PTCs	540
Tips, Tails, and $Q_{10\text{ dB}}$ s	540
Neural Tuning Curves Revisited	541
The Link Between PTCs and Neural Tuning Curves	542
Summary and a Confession	542
Review Questions	542
<b>Chapter 36. Temporal Processing</b>	<b>545</b>
Review of Temporal Integration for Threshold-Level Stimuli	545
Review of Duration Effects on Pitch Perception	545
Gap Detection	546
Gap Detection Ability Is a Function of Frequency	546
Gap Detection Ability Is Related to the Auditory Filter Bandwidth	546
Detection of Gaps in White Noise Uses the High-Frequency	
Cochlear Filters	549
Temporal Successiveness	549
Temporal Discrimination	550
Temporal Discrimination Relates to Distinguishing Voiced From	
Unvoiced Consonants	550
Temporal Modulation Transfer Functions	551

Summary	551
References	552
Review Questions	552
<b>Chapter 37. Temporal Masking</b>	<b>553</b>
Forward Masking: Masker Comes Before Probe Signal	553
Magnitude of the Effect	553
Physiologic Explanations	554
Forward Masking Psychophysical Tuning Curves Are Sharper	554
Backward Masking: Masker Follows Probe Signal	554
Magnitude of the Effect	554
Physiologic Explanation	554
Summary	555
Reference	555
Further Reading	555
Review Questions	555
<b>Chapter 38. Binaural Hearing</b>	<b>557</b>
Binaural Summation	557
Improved DLI and DLF Ability Binaurally	557
Binaural Beats	558
Central Masking	558
Binaural Fusion	558
Localization	559
Temporal Cues to Localization	559
Intensity Differences	560
Combined Effect of Intensity and Phase Differences	561
Central Nervous System Cells Are Responsive to Phase or Intensity Differences	561
Lateralization	562
Interaural Time Difference	562
Interaural Intensity Differences	562
Combined Effects of Intensity and Phase	563
Why Is Lateralization a Different Phenomenon from Localization?	564
Masking Level Differences	564
Summary	565
References	565
Review Questions	565
<b>Chapter 39. Introduction to the Results of Psychoacoustical Assessment of Persons With Hearing Impairment</b>	<b>567</b>
Effect of Hearing Loss on Audibility of Tones and Speech	567
Effect of Loss Type and Severity	567
Loss of Sensitivity for Pure Tones Predicts Loss of Speech Perception Ability	569
Articulation Index Predictions of Speech Understanding Are Imperfect	571
Cochlear Loss Causes Recruitment	572
Difference Limens for Intensity	573
Threshold Temporal Summation Effects	573

---

Widened Psychophysical Tuning Curves	574
Cochlear Dead Regions	575
Off-Frequency Listening	575
Audiometric Characteristics of Dead Regions	575
What Is Perceived When Off-Frequency Listening Occurs?	576
Psychophysical Tuning Curves for Dead Regions	576
Threshold Equalizing Noise (TEN) Test	576
Enhanced DLFs Near Dead Regions?	578
Amplification for Those With Dead Regions	578
Gap Detection Thresholds	579
Results With White Noise Stimuli	579
Gap Detection Results for Pure Tones Depend on Stimulus Intensity Levels	579
Gap Detection Levels Should Theoretically Be Better in Hearing-Impaired Persons	580
Temporal Modulation Detection Ability Is Good If the Signal Is Fully Audible	580
Ability to Detect Very Fast Signal Changes in Frequency and Amplitude Is Poorer Than for Normal Hearers	581
Poorer Pitch Perception Abilities	581
Failure to Take Advantage in Pauses in Interrupted Noise	581
Summary	582
References	583
Further Reading	583
Review Questions	583
<b>Appendix A. The Math Needed to Succeed in Hearing Science</b>	<b>587</b>
<b>Appendix B. Answers to Review Questions</b>	<b>595</b>
<b>Index</b>	<b>615</b>





# Preface

This text provides resources to guide the student in all areas of hearing science: acoustics, instrumentation, anatomy/physiology, and psychoacoustics. It also provides a brief introduction to speech acoustics. Introductory/intermediate chapters are intended for introductory courses in hearing science. The advanced chapters are suitable for doctoral courses in audiology. The professor can select from among the introductory chapters as he or she feels appropriate for introductory courses, or more advanced chapters in order to introduce topics within doctoral courses in hearing science. The later introductory chapters require only material from other introductory chapters, and similarly one can read and understand intermediate chapters without having read any of the advanced chapters. At the end of this Preface is a breakdown of which chapters have which level of information.

Our goal was to create a very readable text. We endeavored to explain concepts as simply as possible.

Some books are reference texts—they present an idea concisely and have information in one and only one location. They are great resources for reviewing information already learned. Some books are instructional texts, and this is one of them. We assume that the reader has no prior exposure to the information. If the novice reads a reference text, there will likely be times when he or she thinks “I’m not sure I understand.” When this happens to professionals learning new information, they search out different articles and books to expand their understanding. The student who has paid a high price for a textbook and does not yet know where to find, or has limited access to, other texts finds this frustrating. This book is to attempt to present information clearly and to repeat that information when presenting more detailed information. The intentional redundancy in the more advanced chapters allows them to serve as reference chapters for students who have already learned the more basic information.

Learning theory says that repetition (e.g., reading information more than one way and both hear-

ing and reading) increases retention, but recall practice is much more effective. The reader is encouraged to attempt to predict summaries. Chapters include review questions to practice recall. The website [www.audstudent.com](http://www.audstudent.com) has a resources section that provides additional review questions and supplemental materials.

The hearing sciences are interesting but not necessarily easy. We hope this text with its somewhat colloquial writing style and repetition of key information facilitates mastery of the topic.

Although we think the hearing sciences are intrinsically interesting, we know that some students have a strong preference for those aspects that relate directly to patient care. We have included “Clinical Correlates,” which show examples of how the hearing sciences relate directly to clinical applications, for those who can use some motivation to master the scientific underpinnings.

---

## ACOUSTICS AND INSTRUMENTATION

---

Introductory: Chapters 1, 2, 3, 4, 5

Intermediate: Chapters 6, 7

Advanced: Chapter 8

---

## SPEECH ACOUSTICS

---

Intermediate: Chapters 9, 10

---

## ANATOMY AND PHYSIOLOGY

---

Introductory: Chapters 11, 12, 13, 16, 18, 20

Intermediate: Chapters 14, 15, 19, 21, 23, 24, 25

Advanced: Chapters 17, 22, 26

**PSYCHOACOUSTICS AND  
SPEECH PERCEPTION**

Introductory: Chapter 27  
 Intermediate: Chapters 28, 30, 32, 33, 36,  
 37, 38  
 Advanced: Chapters 29, 31, 34, 35, 39

Some chapters have “prerequisites.” Understanding the material in these chapters requires that the reader be familiar with the material covered in earlier chapters. These are listed in the following chart.

Chapter	Prerequisite Chapters
1	None
2	None
3	1
4	1
5	1, 2, 3, 4
6	1
7	2, 4, 6
8	1, 2, 3, 6, 7
9	1, 2, 3, 4, 5
10	1, 2, 3, 4, 5, 9
11	None
12	11
13	1, 2, 3, 4, 5, 11, 12
14	1, 3, 11, 12, 13
15	1, 4, 12, 13, 14

16	1, 3, 11, 12, 13
17	6, 16
18	16
19	18
20	11, 16, 18
21	20
22	1, 3, 4, 7, 16, 17, 18, 19, 20, 21
23	16, 20
24	16
25	12, 16, 20, 24
26	24, 25
27	None
28	1, 11, 16, 18
29	27, 28
30	1, 2, 3, 11, 16, 18, 20, 27, 28
31	1, 2, 12, 13, 18, 30
32	1, 11, 16, 18, 30
33	1, 11, 16, 18, 21, 27
34	2, 23, 33
35	21, 33, 34
36	26, 30, 32
37	23, 27, 30, 33
38	1, 3, 30
39	1, 3, 9, 10, 12, 14, 16, 18, 20, 27, 30, 31, 32, 33, 34, 35, 36, 37, 38

# Reviewers

Plural Publishing, Inc. and the authors would like to thank the following reviewers for taking the time to provide their valuable feedback during the development process:

**Darren Kurtzer, AuD,**  
Senior Clinician  
American Institute of Balance  
Largo, Florida  
Adjunct Assistant Professor  
A.T. Still University,  
Mesa, Arizona

**Lisa Koch, AuD**  
Adjunct Associate Professor  
Department of Audiology, Arizona School  
of Health Sciences  
A.T. Still University  
Mesa, Arizona

**Bre Lynn Myers, AuD, PhD**  
Assistant Professor  
Osborne College of Audiology  
Salus University  
Elkins Park, Pennsylvania

**Taylor Unger, AuD**  
Audiologist  
Atlantic Hearing and Balance  
Port Orange, Florida



## About the Authors



**Lloyd L. Price, PhD**, Professor Emeritus of Audiology, taught undergraduate and graduate student courses in the hearing sciences at Florida State University. His teaching career spanned 31 years and he worked clinically before teaching.



**Teri A. Hamill, PhD**, Professor Emeritus of Audiology at Nova Southeastern University, recently took early retirement. She had taught AuD students for 21 years at Nova Southeastern University, and taught at two other universities and was a hospital-based audiologist.

Dr. Hamill's knowledge of instrumentation was furthered by having worked with engineers: Her post-doctorate in 1987 to 1988 was with Project Phoenix/Nicolet, which produced a commercially unsuccessful fully digital hearing aid. Her knowledge of digital signal processing also comes from being married to a computer scientist.

Dr. Price is retired to Havana, Florida, with his wife, Cindy. They frequently travel, particularly to Europe. Dr. Hamill retired in order to sail at least half the year on her antique Shannon 38 cutter-rigged sailboat, and to have more time to read about hair-cell physiology.

---

# 24

## Introduction to Peripheral Vestibular Anatomy and Physiology

---

The history of audiology's involvement in vestibular testing dates back to the mid-1970s, when Barber and Stockwell published a text on how to evaluate the balance system. Since the vestibular system is part of the ear, and as Dr. Barber was an otoneurologist, it made sense that the testing of the balance system became part of the practice of audiology. The involvement of the field grew along with knowledge of the pathologies of the vestibular system, and the diagnostic tests for balance disorders have expanded. Most doctor of audiology programs have two or three courses in vestibular evaluation and management. This chapter and Chapters 25 and 26 provide background on the anatomy and physiology to prepare students for this coursework, and to provide the undergraduate student with an understanding of how humans maintain balance.

Most of us give little thought to our sense of balance. Having a normal balance system means more than not being dizzy. A healthy vestibular system allows moving without falling, knowing where our bodies are in space as we move, and it permits us to see a steady world as we move. Without our vestibular systems, when we move our view of the world would be similar to a video taken with one's cell phone—jumping, blurry images.

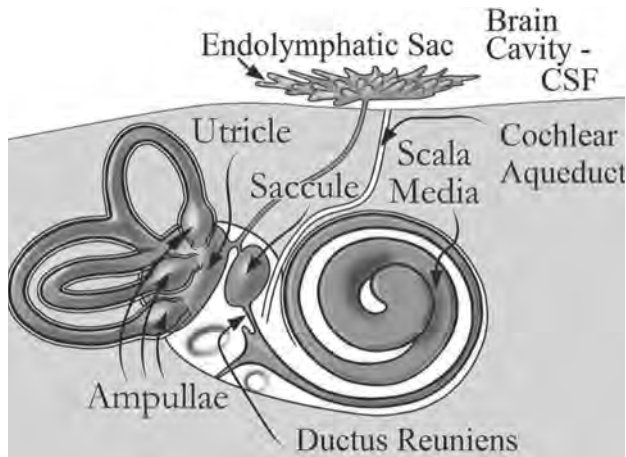
The balance systems comprise more than just the vestibular structures in the inner ear. The

vestibular sense organs are connected to brainstem structures that reflexively control the movement of the eyes. This permits unblurred vision as we turn our heads. Nerve fibers in the brainstem go to the cerebellum, to the neck, and to motor pathways, all of which control body motions and allow us to remain upright. This chapter introduces the peripheral vestibular system; Chapter 25 provides more detail, and Chapter 26 describes advanced vestibular concepts including how the central nervous system integrates information to help us make the eye movements that allow us to keep focused vision as we move our heads and bodies.

### THE VESTIBULAR SYSTEM: BONY AND MEMBRANOUS LABYRINTHS

---

As was discussed in Chapter 16, the same fluids are in both the vestibular system and the cochlea. Perilymph is found between the bony walls of the vestibular system and the membranes; endolymph is within the membranes. A small stalk, **ductus reuniens, connects the endolymph-filled scala media of the cochlea to the saccule**, which is connected to the **utricle**. The utricle and saccule are portions of the membranous labyrinth that **sense when our bodies are moving**



**Figure 24–1.** The membranous labyrinth includes the scala media of the cochlea, the utricle and saccule in the vestibule, and membranous arcs within the semicircular canals. Perilymph is found outside the membranous labyrinth. There is a stalklike extension of both the endolymph-filled membranous labyrinth and the perilymph-filled scala tympani. The perilymph in the scala tympani connects via the cochlear aqueduct to a space in the cranium filled with cerebrospinal fluid (CSF). The membranous labyrinth connects to the endolymphatic duct, which connects to the endolymphatic sac, tucked into the dura mater covering the brain. Source: Modified from copyright © Miguel Reynel 2013, used with permission.

**in a straight line** (e.g., riding in a car, descending in an elevator) and when our heads are tilting. The **semicircular canals** contain the sense organs that **detect rotation**, such as the head pivoting on the neck. The three semicircular canals open into the utricle, as shown in Figure 24–1. Each of the semicircular canals has an enlargement, or ampulla, at one end. The sensory cells are in the ampullae. (*Ampulla* is singular, *ampullae* is the plural form.)

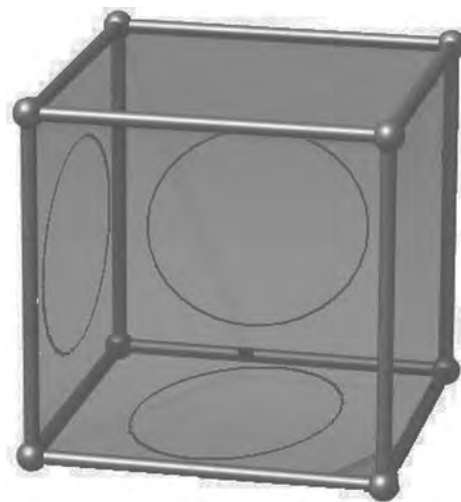
A tube, called the **cochlear aqueduct**, runs from the **perilymph-filled space** of the bony labyrinth **to the brain above**. It appears that the opening to the cerebrospinal fluid (CSF) space of the brain is not patent; CSF is not freely flowing. (The chemistry of CSF and perilymph are a bit different.) Perilymph is thought to be derived from “blood serum substrate,” that is, the part of the blood other than the red and white blood cells. Endolymph in the cochlea is produced by stria vascularis; in the vestibular system, a type of cell within

the ampulla, dark cells, are believed to produce and nourish the endolymph. There is also a connection, called the **endolymphatic duct**, **between the saccule and utricle and the endolymphatic sac**. The endolymphatic sac rests in the dura mater of the brain—the outside of the meninges, the covering of the cranium. The presence of these ducts to the brain hints at the inner ear’s ability to regulate the pressure of the inner ear fluids. If the system were to create too much endolymph or perilymph, there would be some room for expansion. The endolymphatic sac could bulge a bit; the cochlear aqueduct might allow some pressure relief into the CSF-filled brain cavity.

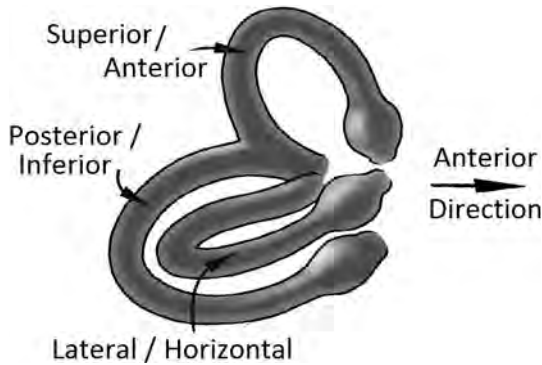
## Arrangement of the Semicircular Canals

**Each of the three semicircular canals of one ear is oriented at right angles to each other.** This is easier to envision in the sketch of the circles superimposed on three of the sides of a cube, shown in Figure 24–2.

However, the actual arrangement of the semicircular canals is not as simple as sketched in Figure 24–2; it is more like that in Figure 24–3. The semicircular canals are named for their anatomic



**Figure 24–2.** The three semicircular canals lie perpendicular to each other, just as three sides of a cube are perpendicular to each other.



**Figure 24-3.** The semicircular canals are named by their anatomic arrangement. Each canal may be known by one of two names. Source: Modified from copyright © Miguel Reynel 2013, used with permission.

location. The **horizontal** or **lateral semicircular canal** is **tilted about 30 degrees off horizontal**. It is lower in the back than in the front

(Figure 24-4A). The canal that is most anterior also is the highest one; thus, this canal is called either the **superior** or the **anterior semicircular canal**. The third canal is named either the **inferior** or the **posterior semicircular canal**.

### Planes of the Canals of the Right and Left Ears Are Aligned

As shown in Figure 24-5, **the right anterior and left posterior canals are both angled in the same orientation**. The acronym RALP is commonly used to describe the two canals. The **left anterior and right posterior canals also line up**; this pair goes by LARP. Thus, movement of the head in one direction will cause stimulation in pairs of canals. That holds true for the horizontal canals, too. Moving the head as if shaking no causes the **pair of horizontal canals** (right and left) to be stimulated.

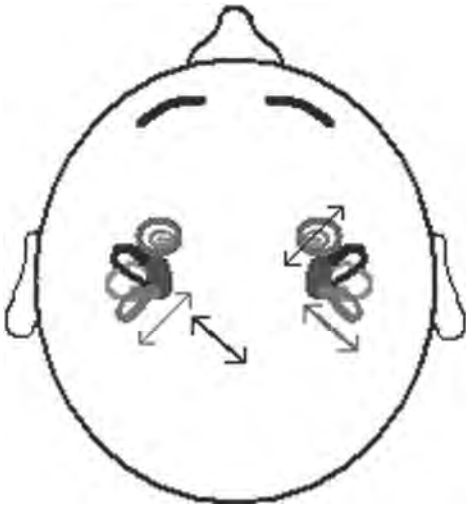
#### Clinical Correlate: Orienting the Horizontal Semicircular Canal

When testing people with dizziness using a test called videonystagmography or electronystagmography, there is a portion of the test that requires that the horizontal semicircular canal be positioned straight up and down. To do this, recline the patient into a supine position, and then elevate his or her head 30 degrees. This will place the semicircular canal in the desired direction (see Figure 24-4).



**Figure 24-4.** **A.** Orientation of the horizontal semicircular canal in the upright patient. **B.** When supine, the horizontal canal is not oriented vertically. **C.** Tilting the head up approximately 30 degrees aligns the horizontal canal straight up and down.





**Figure 24–5.** Orientation of the right anterior and left posterior (RALP) and left anterior and right posterior canals (LARP) are in line. Thus, these pairs of canals will be stimulated by the same directional head motion.

## ANATOMY AND PHYSIOLOGY OF THE SEMICIRCULAR CANALS

### Structures within the Ampullae of the Semicircular Canals

Recall that the cochlea has a membrane covering the hair cells (reticular lamina) and that the hair cells themselves are bathed in perilymph. The vestibular system's setup is similar. The movement-sensing **vestibular hair cells are below a membrane barrier in perilymph**; the sensing cell cilia will **project into the potassium-rich endolymph**. Collectively, the **cells in the ampulla** are called the **crista** or **crista ampullaris**. You will sometimes read that the crista is made up of **sensory epithelium**.

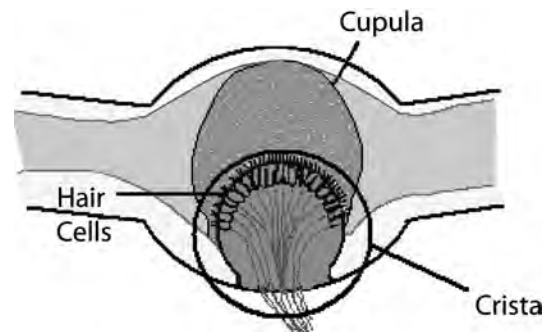
The crista contains hair cells. Just like in the cochlea, there are two types of hair cells. They are not arranged in the same way, so the terms *outer* and *inner* would not be appropriate, as the two types of cells are mixed together in the same locations. We call them **type I** and **type II vestibular hair cells**. The **type I** cells are shaped somewhat like a vase with a pinched neck, **similar in shape to the inner hair cells**. This shape

is also called globular. The **type II hair cells are taller and straighter, like the cochlea's outer hair cells**. Both types of cells have cilia on them, and when deflected, the **cilia will open microchannels, allowing potassium into the cell, depolarizing the hair cells**.

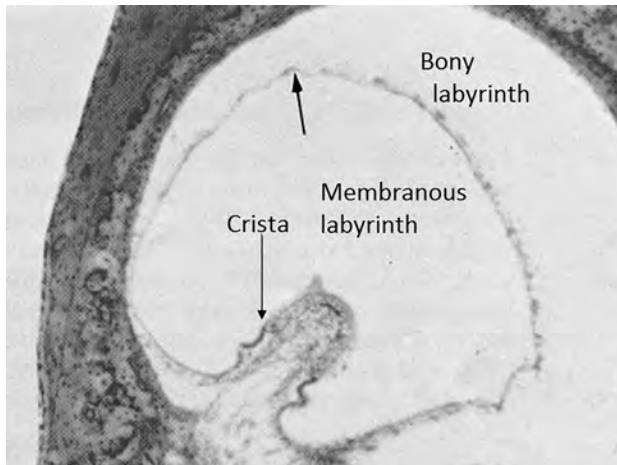
In the cochlea, the cilia of the outer hair cells project into the gelatinous tectorial membrane. In the ampulla of the semicircular canals, the type I and II hair cell **cilia project into a gelatinous mass called the cupula**. The cupula hangs from the top of the ampulla, as illustrated in Figure 24–6.

The cupula is essentially floating in endolymph, although it is attached to the roof of the ampulla. This means that it can move somewhat when the fluid moves. An analogy for this situation is the twisting of a Hula-Hoop. When the Hula-Hoop spins, the pebbles inside lag behind because of their inertia. If viewed from a camera mounted inside the Hula-Hoop, the pebbles would appear to be moving backward. Rotating the head moves the semicircular canals, which are firmly attached to the head, which causes the cupulas to lag behind.

The cupula can move only so far: It will hit the walls of the ampulla if the movement continues, for example, if you are on a merry-go-round. As you spin and spin on the merry-go-round (at a constant speed), the fluid eventually is going to catch up to the speed of the body and the cupula will float in a relatively neutral position again. When you slow down, the fluid will still be



**Figure 24–6.** Arrangement of structures within the ampulla. The hair cells are in the crista and are not within the membranous labyrinth, although the hair cell cilia project into it. The cupula is a gelatinous structure into which the cilia embed.



**Figure 24–7.** Scanning microscope view of a cross section of an ampulla. Source: Modified from Jozeppy26, <https://commons.wikimedia.org/w/index.php?curid=10253283>.

moving as the body decelerates, and the cupula would be forced in the opposite direction.

Figure 24–7 shows an electron microscope cross-section view of an ampulla. The cupula is not shown in this figure. It provides a nice illustration of the bony versus membranous labyrinths, and how the hair cell bodies in the ampulla are surrounded by perilymph. The cilia (not visible in this picture) project into the membranous labyrinth.

## Angular Head Motion Directions

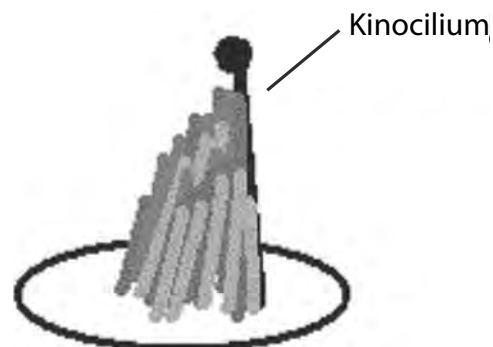
The **semicircular canals are arranged to detect angular motion in any direction**. Sometimes these motion directions are referred to as **yaw, pitch, and roll**. Yawing is moving around a vertical axis. Shaking your head no is an example of this motion. A boat at anchor in a shifting wind yaws back and forth. The horizontal semicircular canals would be stimulated with this type of movement. A boat crashing through the waves has its bow (front) tossed upward and downward; it is said to be pitching. Shaking your head yes creates the same sort of movement. Looking at Figure 24–5, note that both the anterior and posterior canals would be partially stimulated by this type of motion. Rolling is when a boat tips left to right, as

when a wake from a passing boat hits the side of the boat. Repeatedly tilt your head toward your shoulder—left ear down to the left shoulder, then right ear down to the right shoulder. Again, the anterior and posterior canals sense this motion.

## Cilia and Kinocilium in the Ampullae

The cilia on a vestibular hair cell look a bit different from those on an auditory hair cell. First, a kinocilium—a very tall cilium—exists on vestibular hair cells (both type I and type II). Second, the cilia are not neatly in rows—they form a central mound. The tallest stereocilia are nearest the kinocilium (Figure 24–8).

Just as with auditory hair cells, the adjacent cilia are linked together. **Deflecting the tallest cilia therefore moves the entire bundle**. And again, as in the auditory system, the **movement of the cilia will open and close channels in the cilia**. Moving the stereocilia in one direction (toward the kinocilium) will open the **mechano-electrical transduction (MET) channels**, allowing potassium to enter the cell and excite it. Movement in the opposite direction closes the channel and slows the neural firing rate. (Vestibular nerve cells, like auditory ones, will fire spontaneously without stimulation.)



**Figure 24–8.** Illustration of the cilia on top of a vestibular hair cell. Hair cells in the vestibular system have a tall kinocilium. The cilia are clustered together and linked together, so that movement on any one part moves the entire bundle.